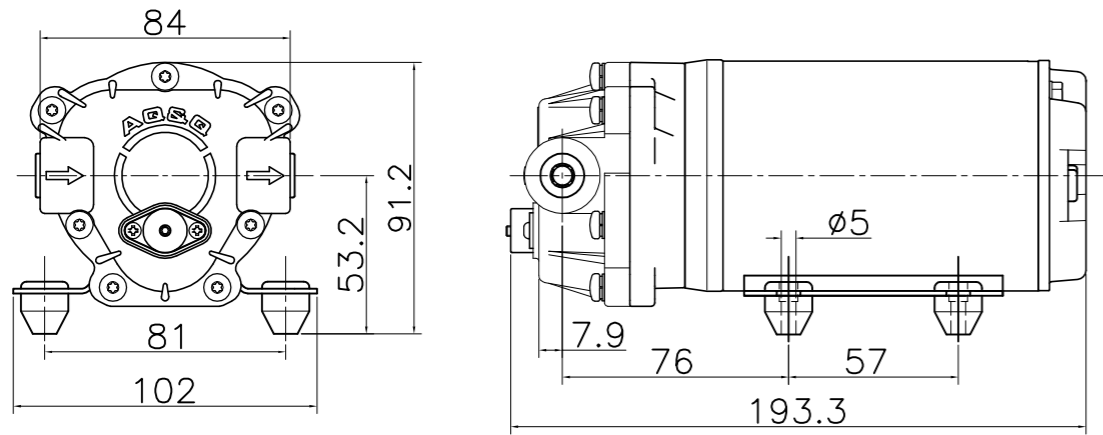
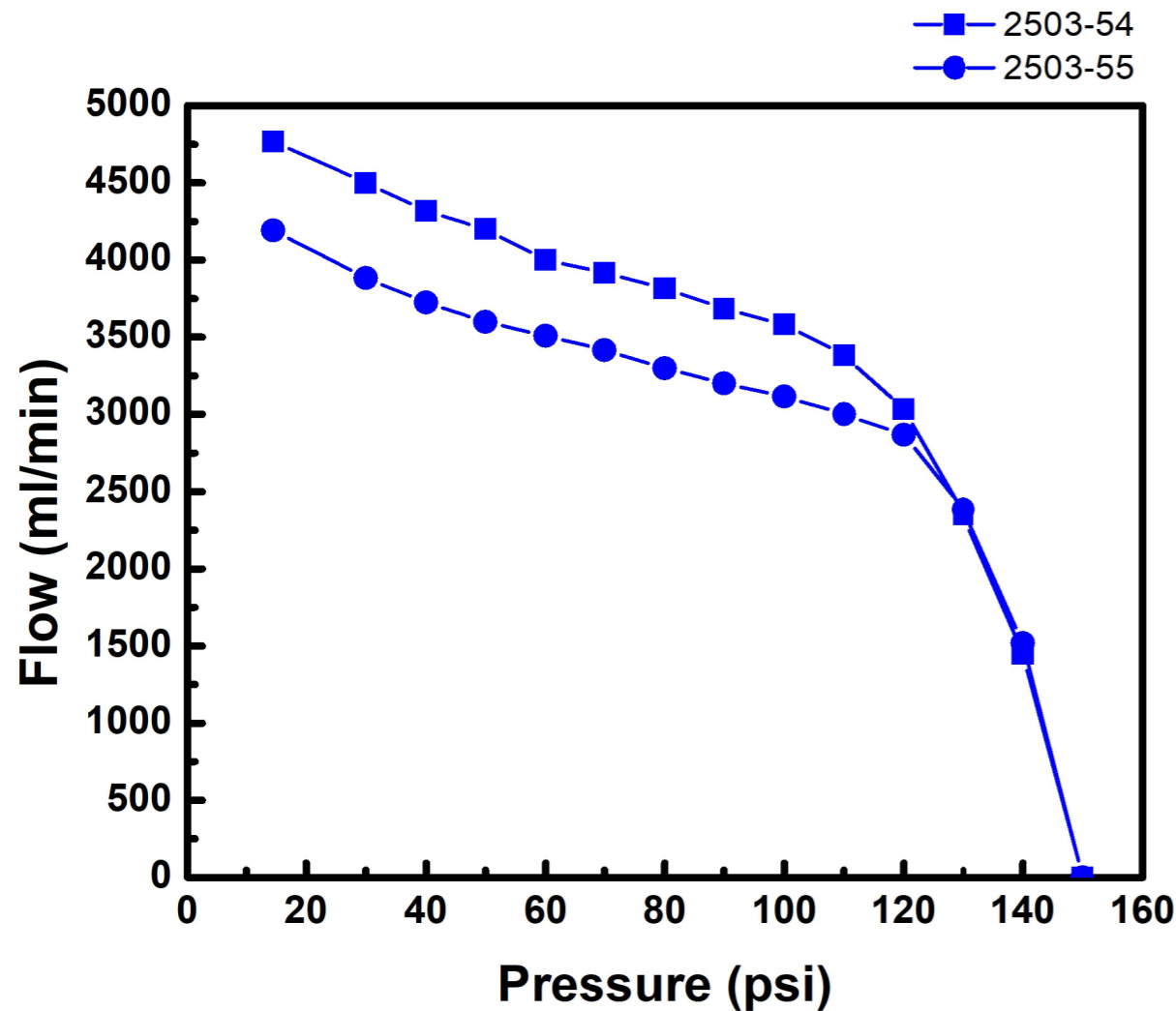


Dimension : MM



Specifications :

- ⊙ Design Positive displacement
3 - chamber diaphragm pump
- ⊙ Motor Permanent magnet / Carbon brush
- ⊙ Voltage 115VAC, 230VAC
- ⊙ Ports 10 mm Quick connect
3 / 8 " Quick connect
5 / 16 " Quick connect
- ⊙ Material Santoprene™ & Polyamide
- ⊙ Pressure control Adjustable By-pass



TEST CONDITION

1. TEST MODEL : 2503
2. INLET PRESSURE : 1 BAR
3. INPUT VOLTAGE : 115VAC, 230VAC, 24VDC

2503 - 55

| PRESSURE (psi) | FLOW (ml/min) | CURRENT (Amps) | | |
|----------------|---------------|----------------|--------|-------|
| | | 230VAC | 115VAC | 24VDC |
| BY - PASS | | 0.395 | 0.832 | 3.41 |
| 140 | 1517 | 0.374 | 0.792 | 3.21 |
| 130 | 2383 | 0.358 | 0.761 | 3.04 |
| 120 | 2867 | 0.340 | 0.727 | 2.83 |
| 110 | 3000 | 0.322 | 0.689 | 2.69 |
| 100 | 3117 | 0.305 | 0.643 | 2.54 |
| 90 | 3200 | 0.281 | 0.606 | 2.28 |
| 80 | 3300 | 0.261 | 0.560 | 2.18 |
| 70 | 3417 | 0.243 | 0.520 | 1.94 |
| 60 | 3508 | 0.221 | 0.479 | 1.73 |
| 50 | 3600 | 0.204 | 0.437 | 1.55 |
| 40 | 3725 | 0.183 | 0.384 | 1.35 |
| 30 | 3883 | 0.161 | 0.334 | 1.02 |
| OPEN | 4192 | 0.128 | 0.272 | 0.72 |

2503 - 54

| PRESSURE (psi) | FLOW (ml/min) | CURRENT (Amps) | | |
|----------------|---------------|----------------|--------|-------|
| | | 230VAC | 115VAC | 24VDC |
| BY - PASS | | 0.455 | 0.961 | 4.07 |
| 140 | 1450 | 0.434 | 0.904 | 3.81 |
| 130 | 2350 | 0.415 | 0.864 | 3.60 |
| 120 | 3033 | 0.391 | 0.823 | 3.37 |
| 110 | 3383 | 0.371 | 0.774 | 3.17 |
| 100 | 3583 | 0.348 | 0.727 | 2.91 |
| 90 | 3683 | 0.320 | 0.673 | 2.72 |
| 80 | 3817 | 0.303 | 0.630 | 2.48 |
| 70 | 3917 | 0.278 | 0.576 | 2.25 |
| 60 | 4000 | 0.257 | 0.514 | 2.04 |
| 50 | 4200 | 0.233 | 0.473 | 1.82 |
| 40 | 4317 | 0.208 | 0.424 | 1.59 |
| 30 | 4500 | 0.186 | 0.371 | 1.23 |
| OPEN | 4767 | 0.158 | 0.313 | 0.98 |